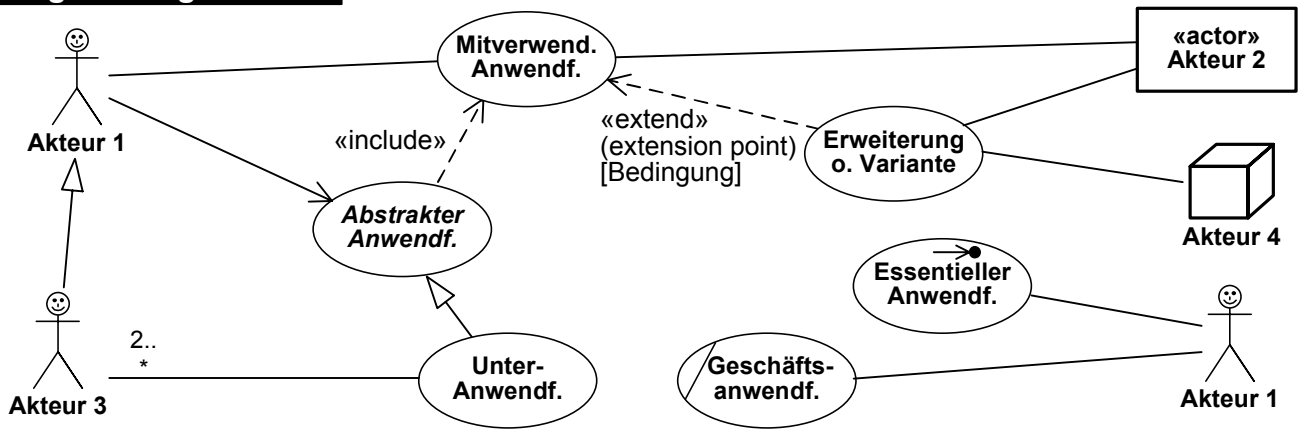
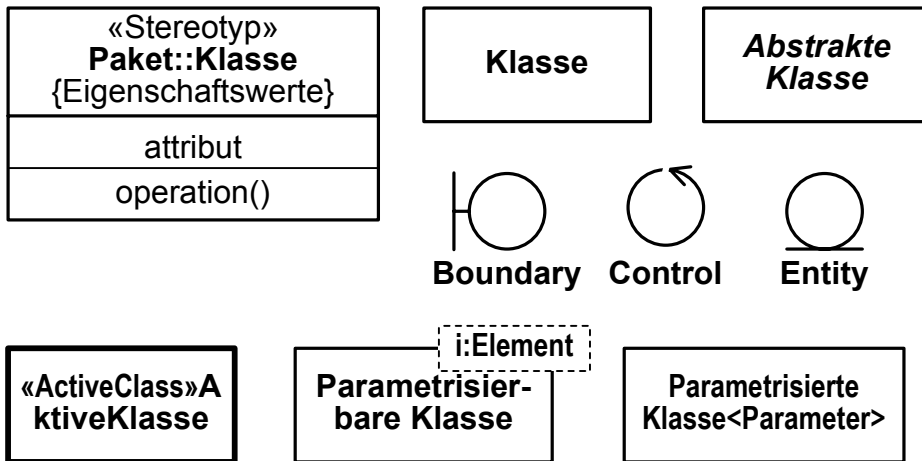


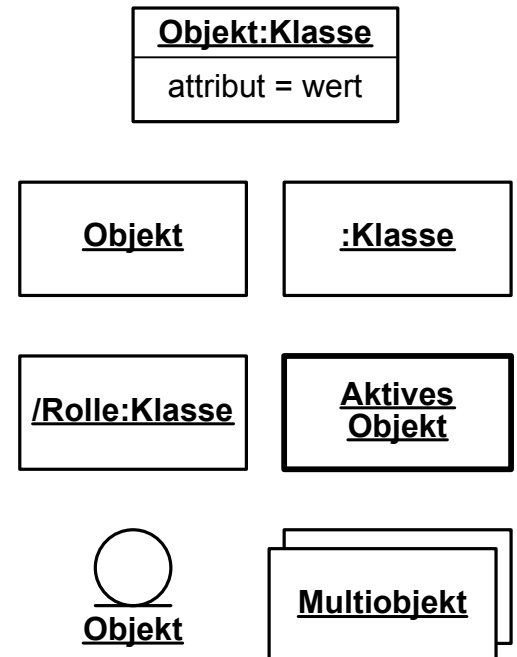
Anwendungsfalldiagramm



Klassen



Objekte



Syntax für Attribute:

Sichtbarkeit Attributname : Paket::Typ [Multiplizität Ordnung] = Initialwert {Eigenschaftswerte}

Syntax für Operationen:

Sichtbarkeit Operationsname (Parameterliste): Rückgabotyp {Eigenschaftswerte}

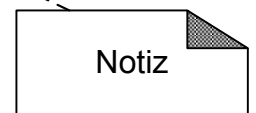
Sichtbarkeit:

- + public element
- # protected element
- private element
- ~ package element

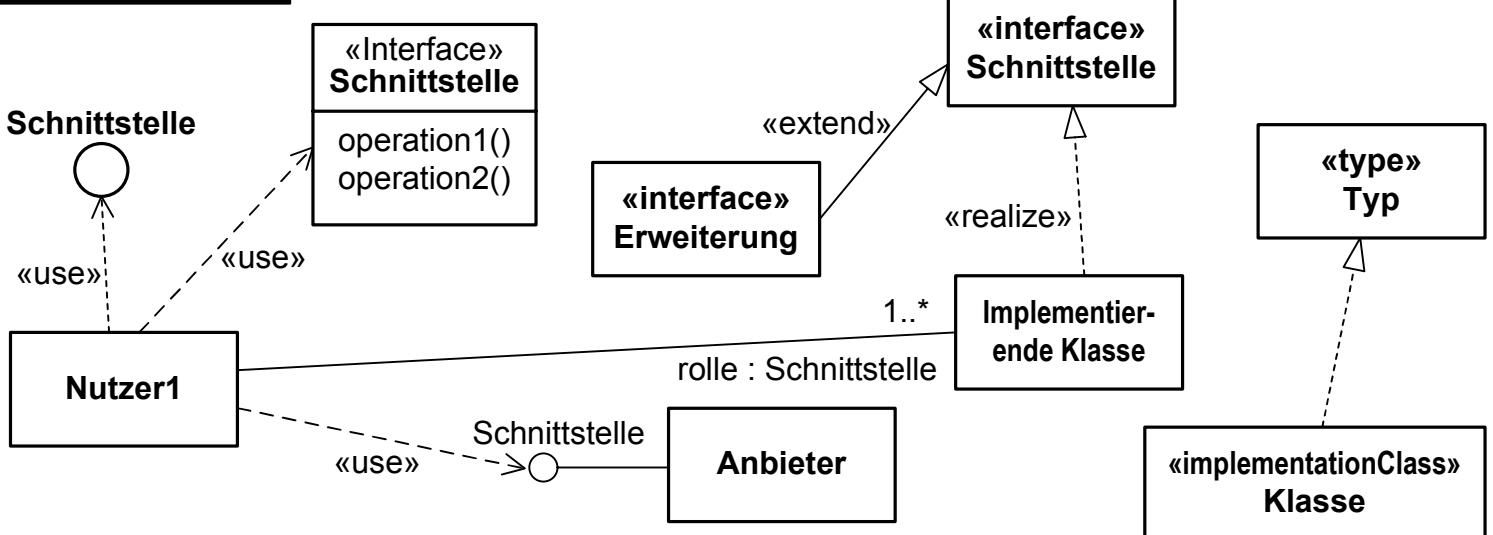
Parameterliste: Richtung Name : Typ = Standardwert

Richtung: in, out, inout

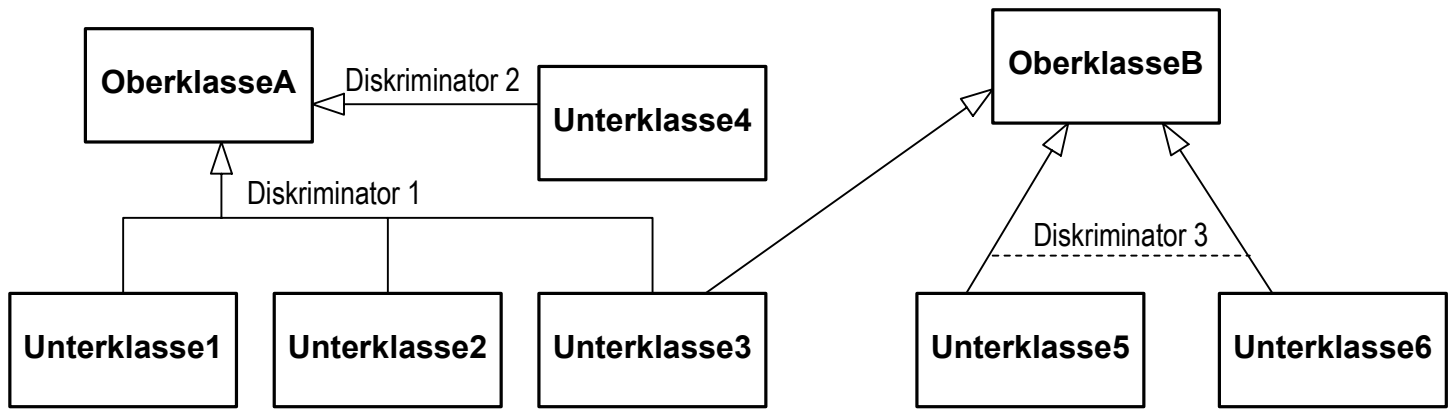
Notiz



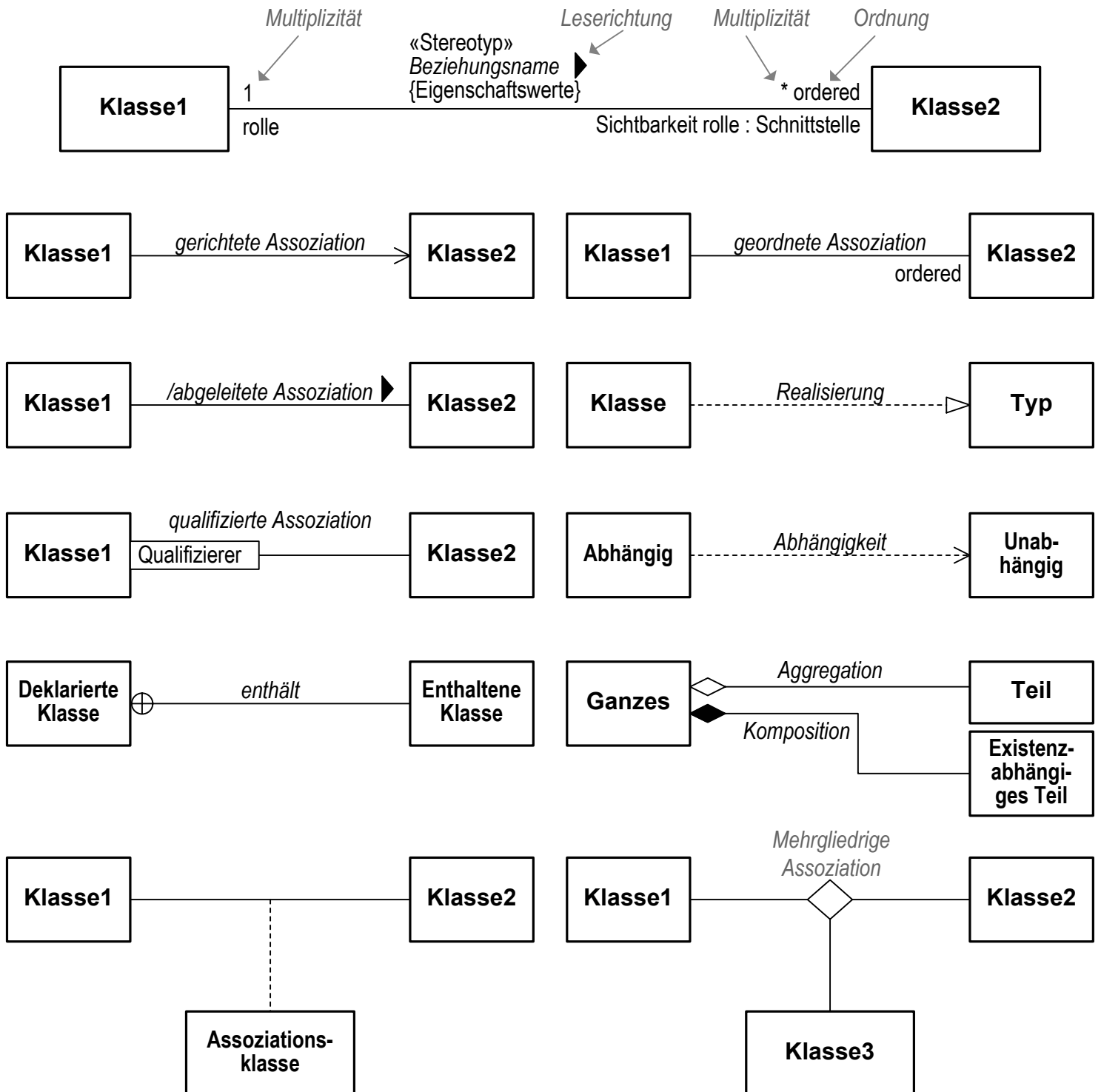
Schnittstellen



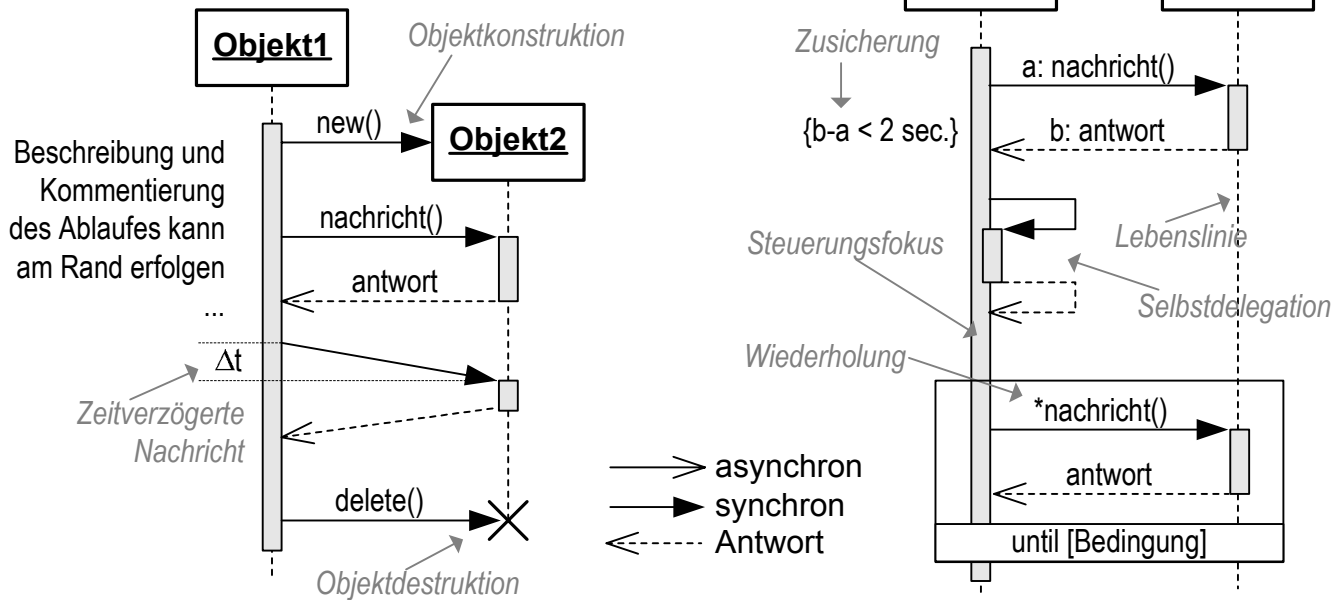
Vererbung



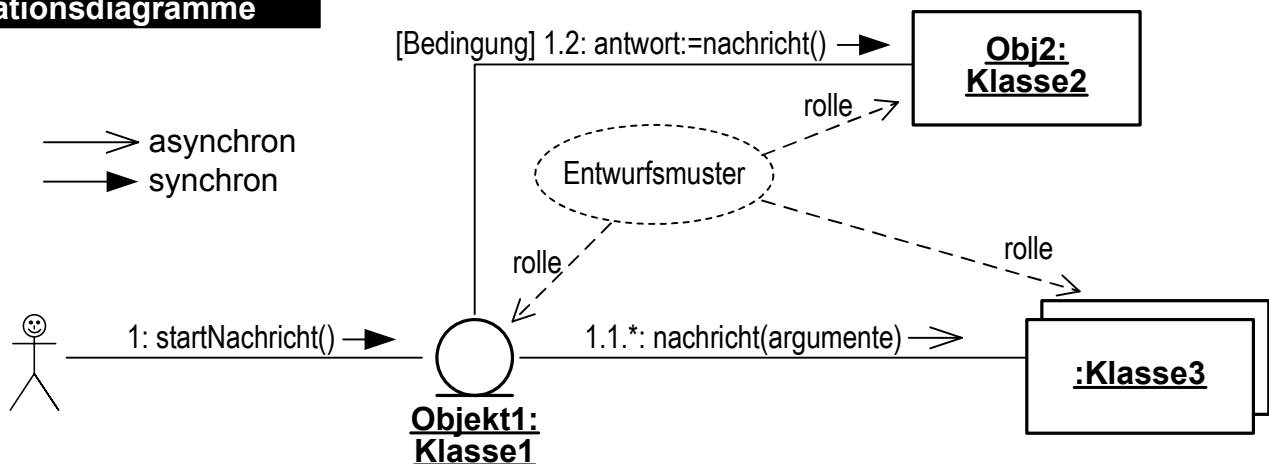
Assoziationen



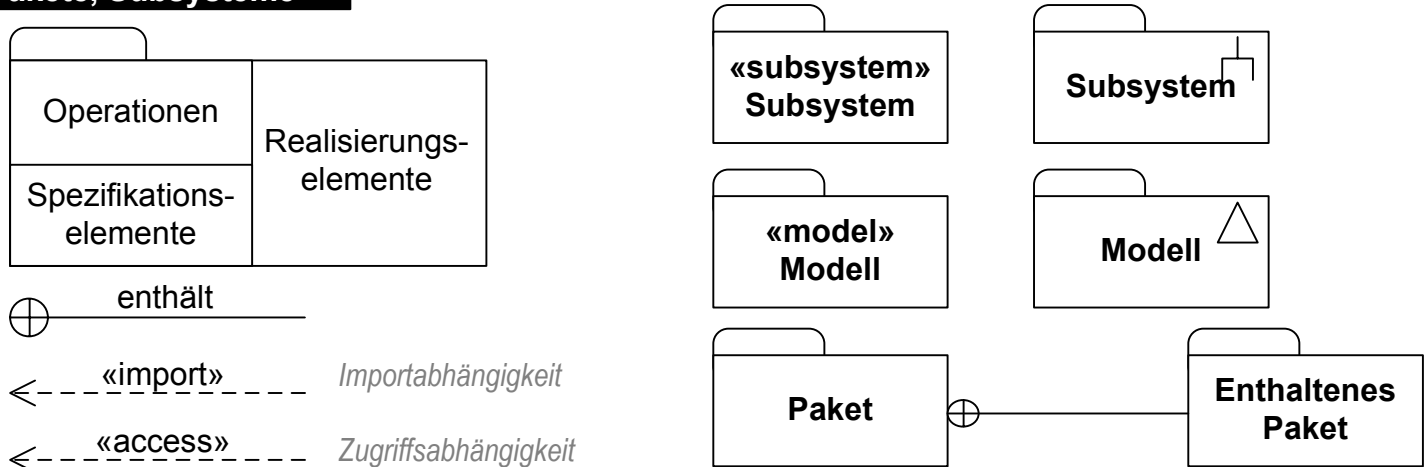
Sequenzdiagramme



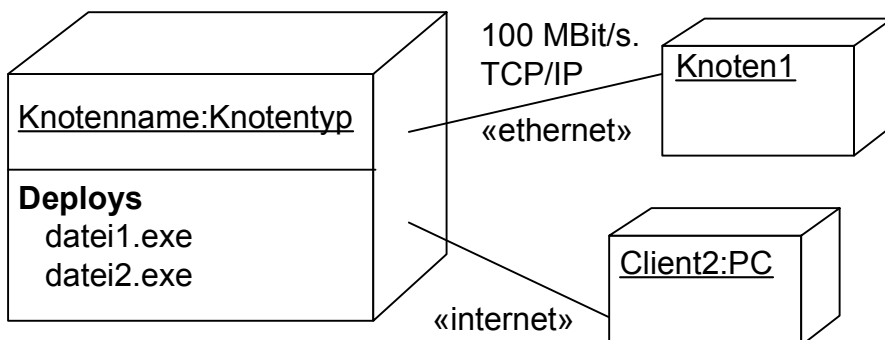
Kollaborationsdiagramme



Pakete, Subsysteme



Einsatz- und Verteilungsdiagramm



Zusicherung

context Klassenname context Person

inv: Invariante inv: alter > 18

pre: Vorbedingung

post: Nachbedingung

Eigenschaftswert

{schlüsselwort=wert}

{abstract=true}

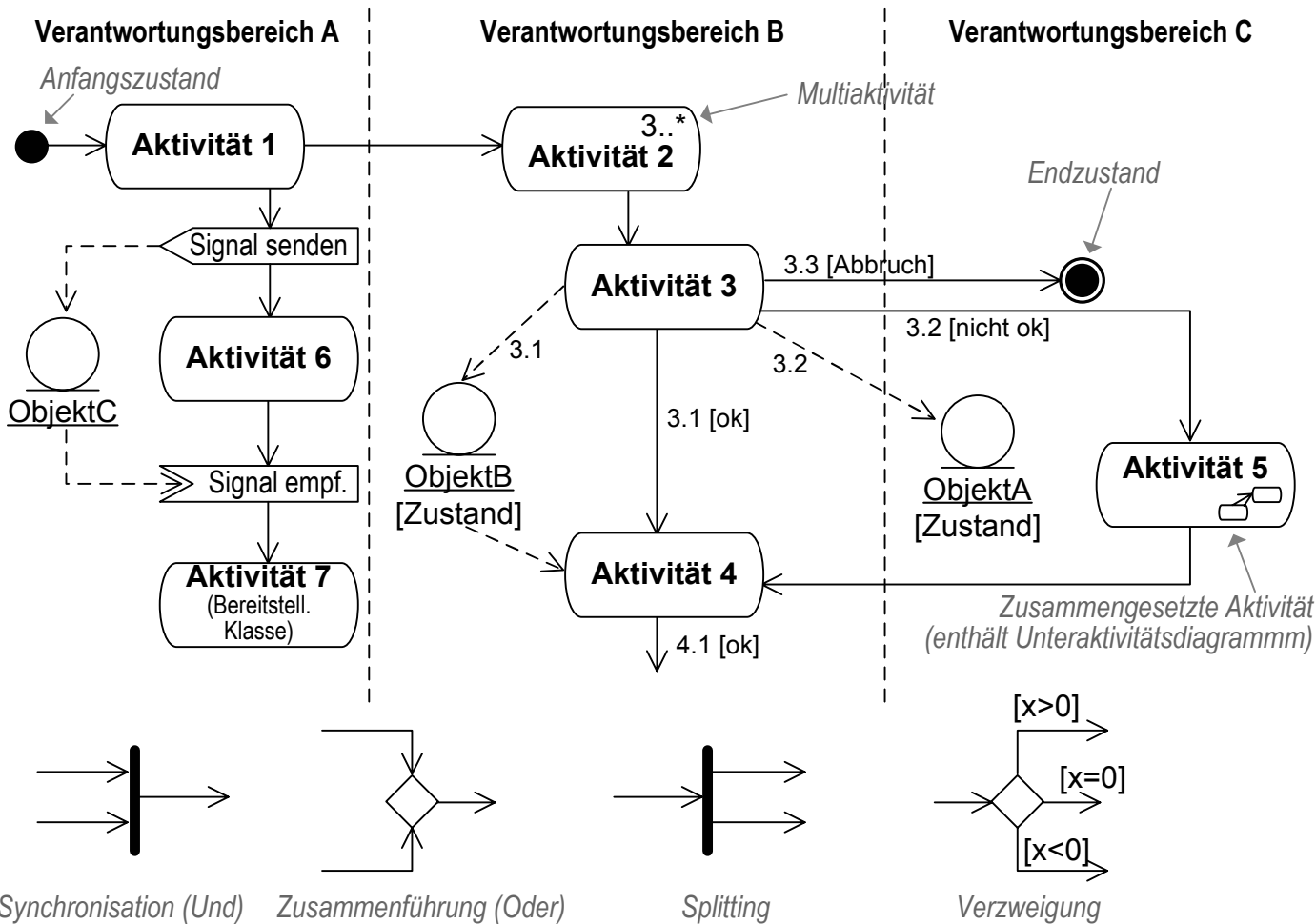
{abstract}

Stereotyp

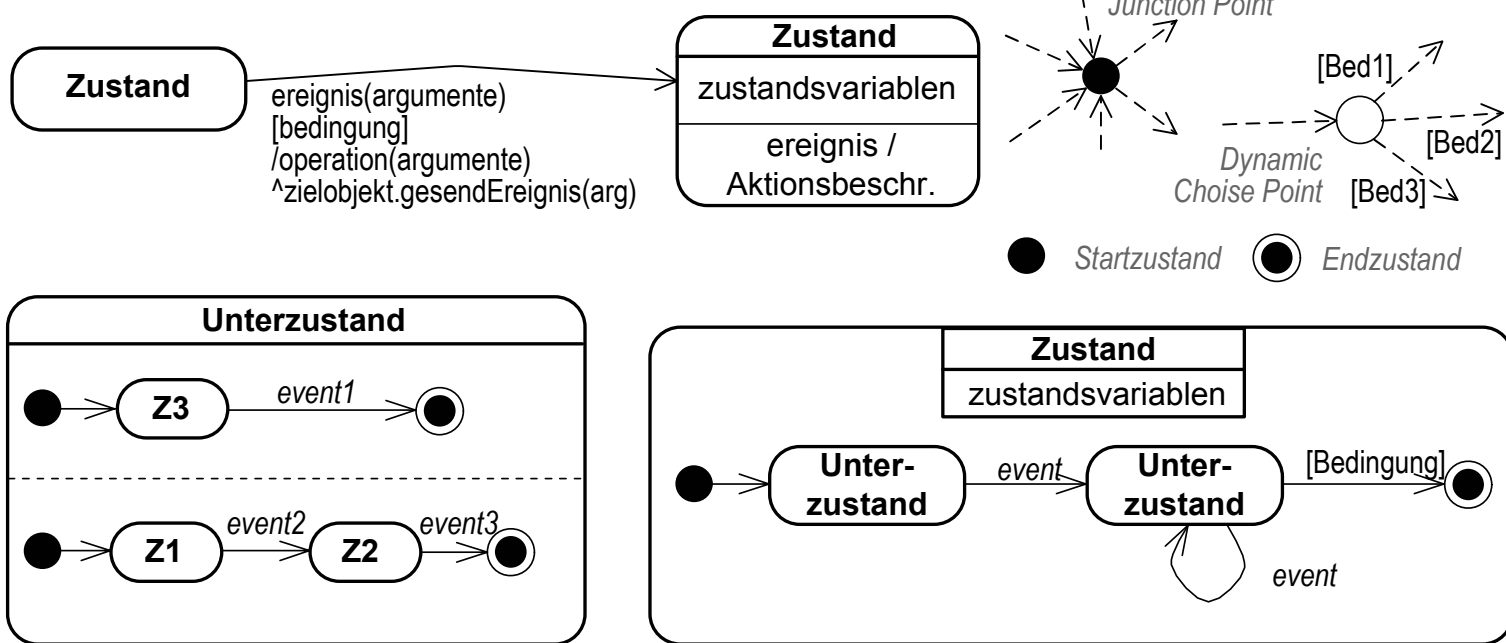
«stereotyp»

«interface»

Aktivitäts- und Objektflussdiagramm



Zustandsdiagramme



Komponentendiagramme

