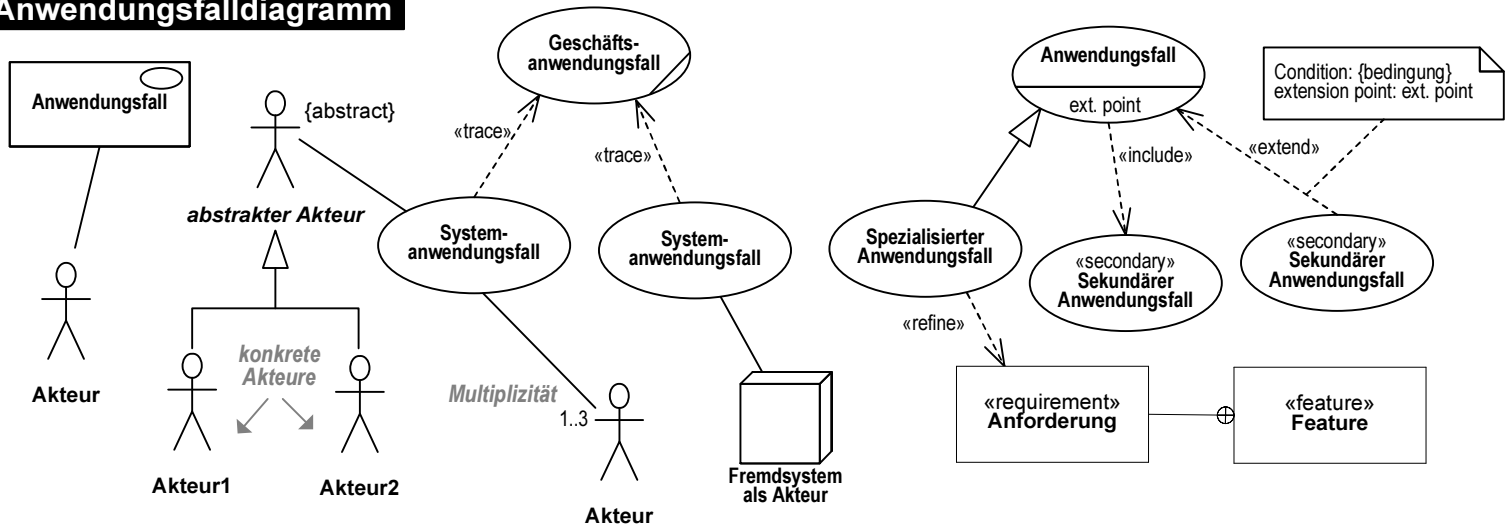
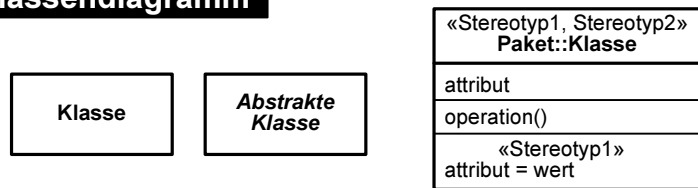


# Anwendungsfalldiagramm



# Klassendiagramm



## Syntax für Attribute:

Sichtbarkeit Attributname : Paket::Typ [Multiplizität Ordnung] = Initialwert {Eigenschaftswerte}  
 Eigenschaftswerte: {readOnly}, {ordered}, {composite}

## Syntax für Operationen:

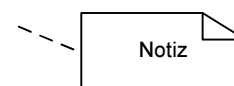
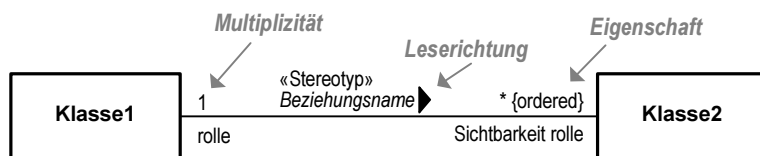
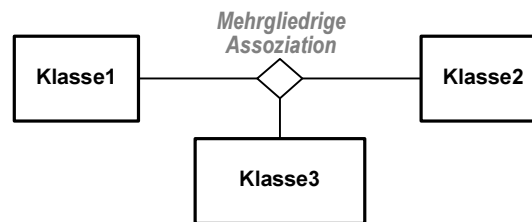
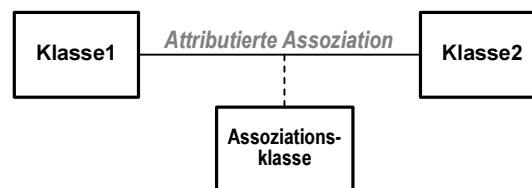
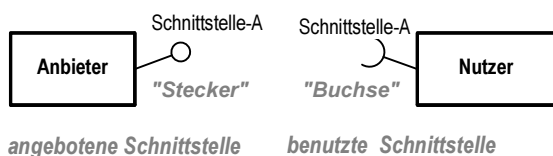
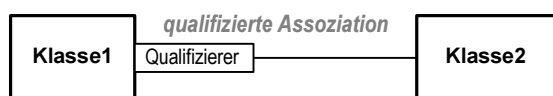
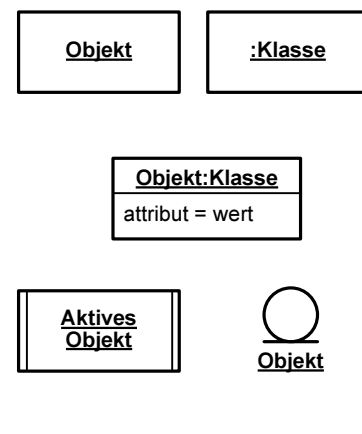
Sichtbarkeit Operationsname (Parameterliste):Rückgabety (Eigenschaftswerte)

Sichtbarkeit:

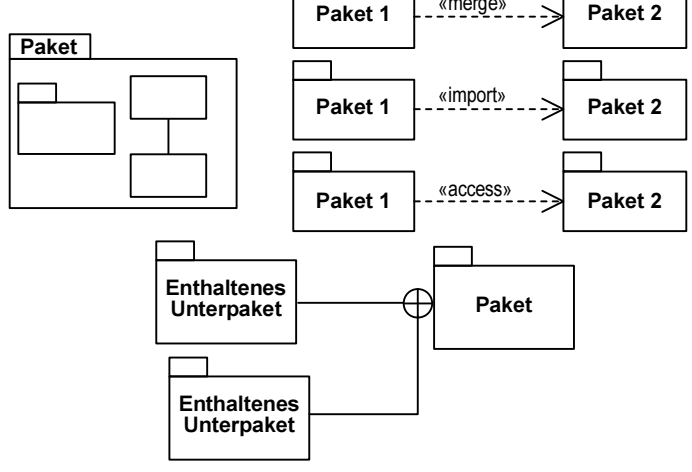
- + public element
- # protected element
- private element
- ~ package element

Parameterliste: Richtung Name : Typ = Standardwert  
 Eigenschaftswerte: {query}  
 Richtung: in, out, inout

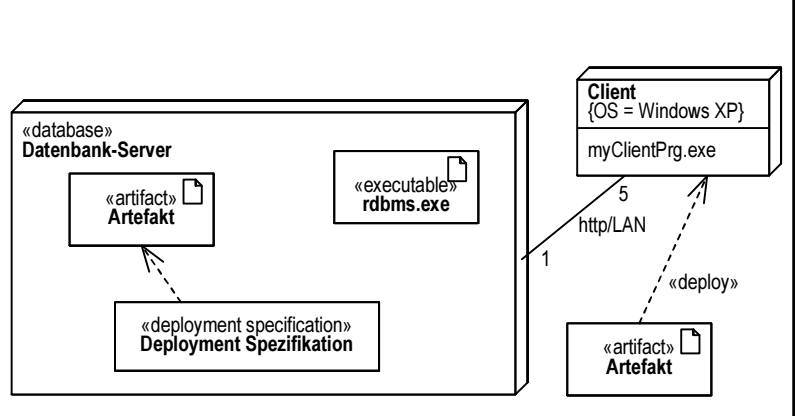
# Objektdiagramm



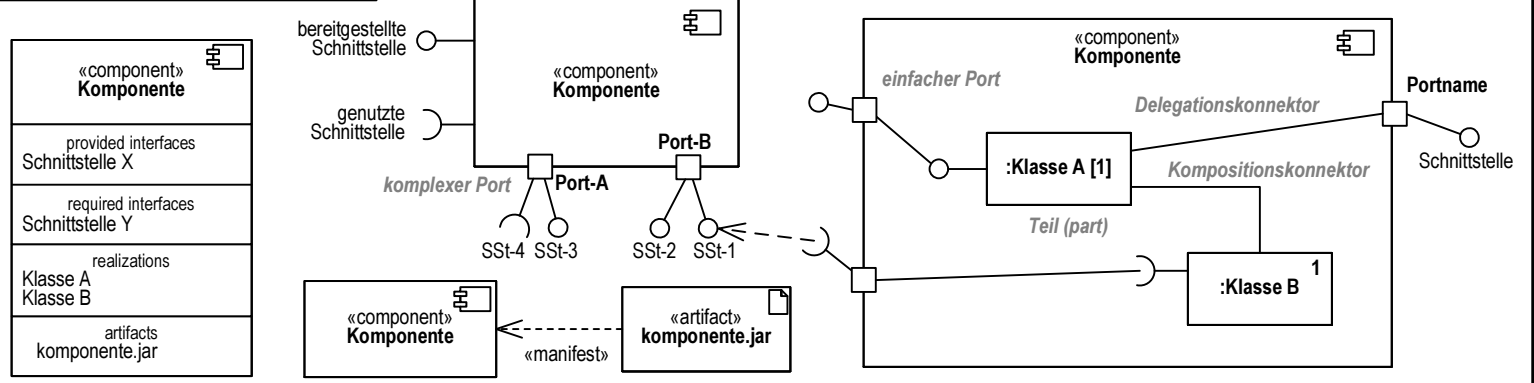
### Paketdiagramm



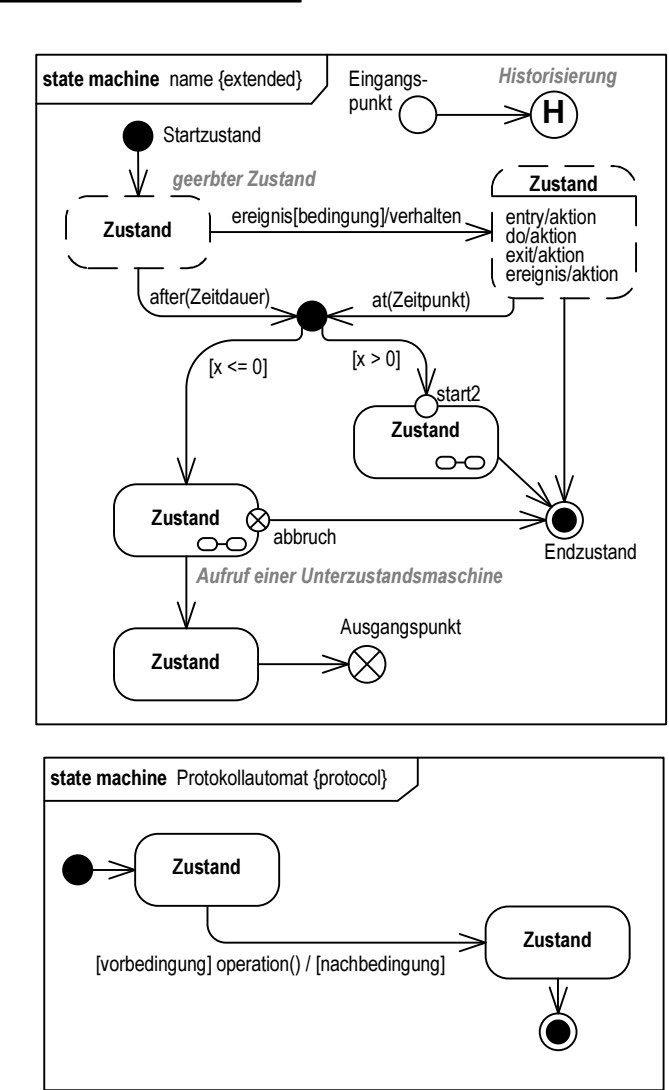
### Einsatz- und Verteilungsdiagramm



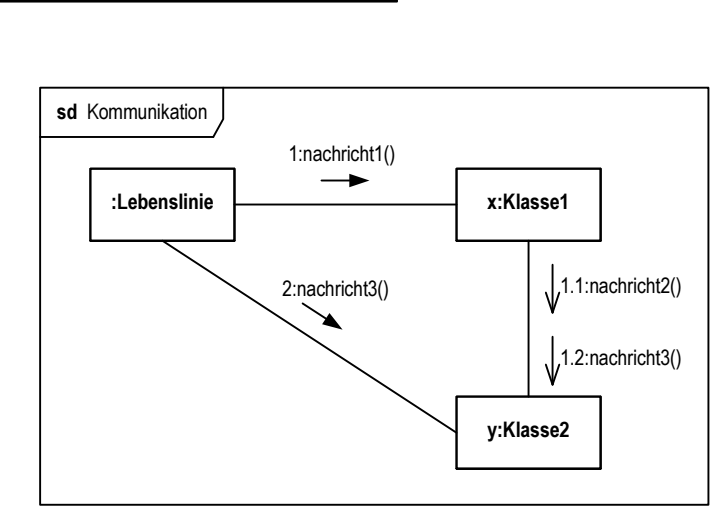
### Komponentendiagramm



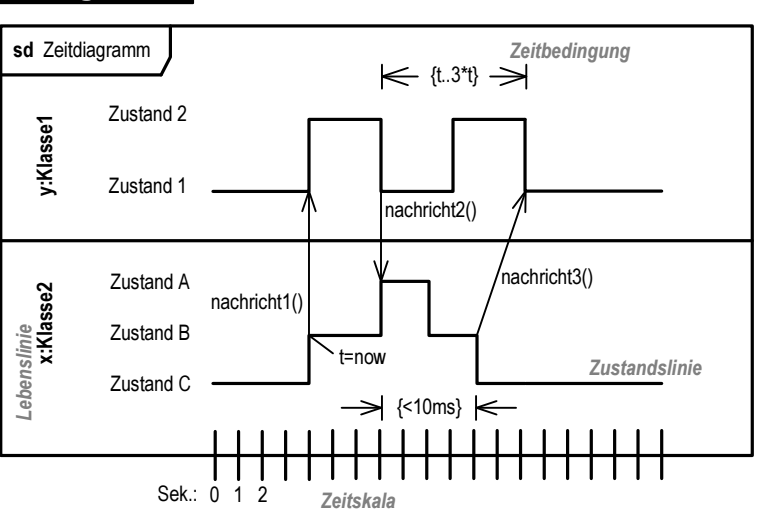
### Zustandsdiagramm



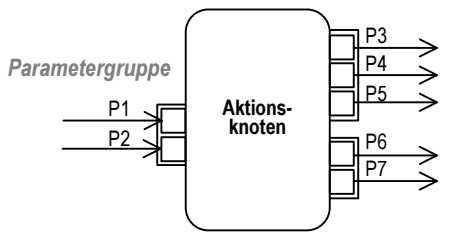
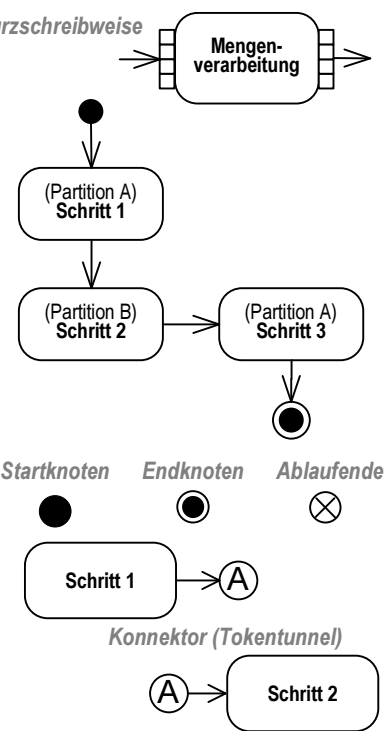
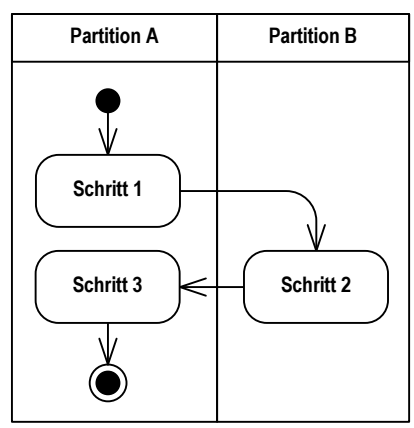
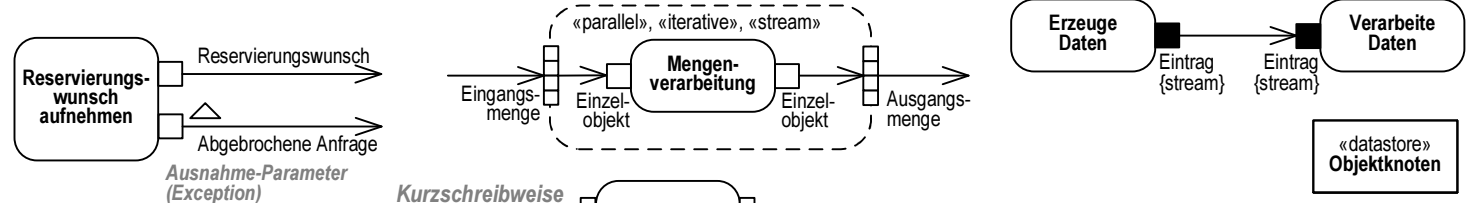
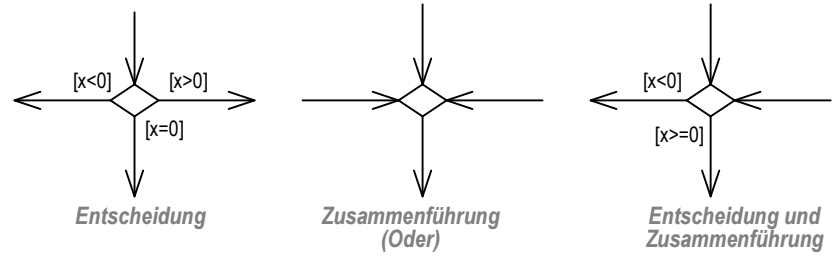
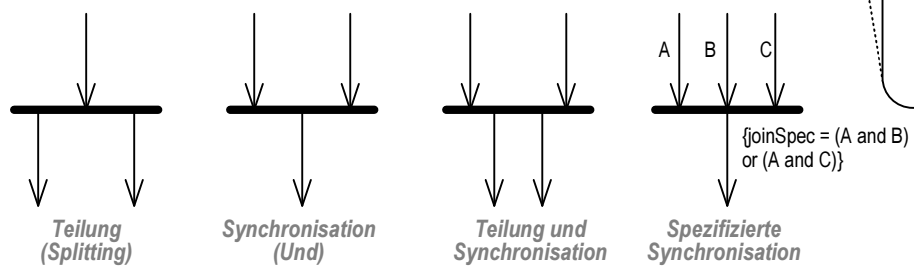
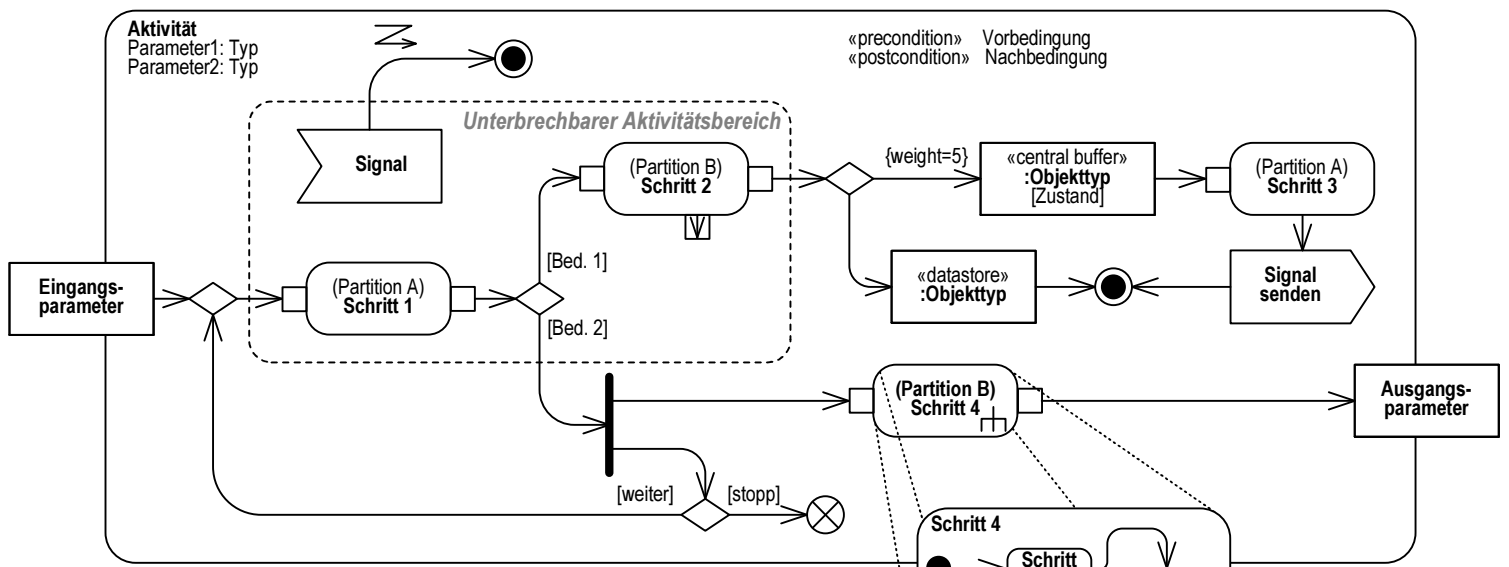
### Kommunikationsdiagramm



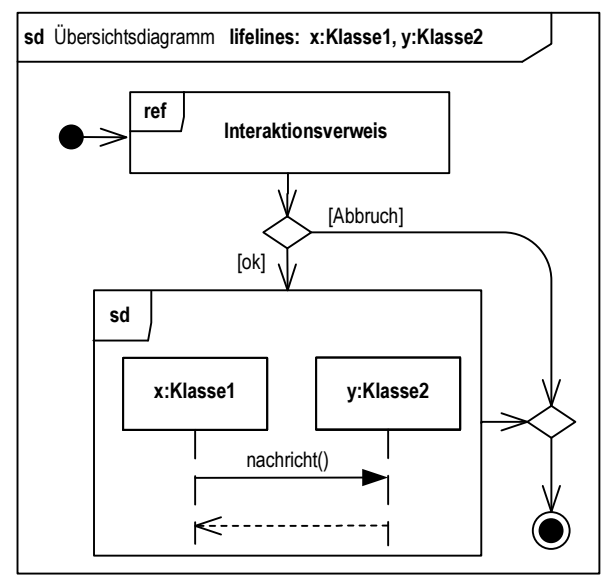
### Zeitdiagramm



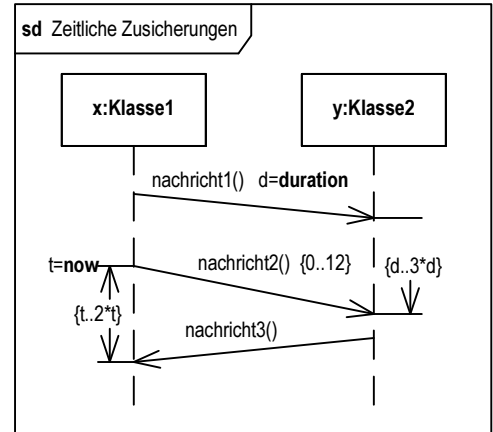
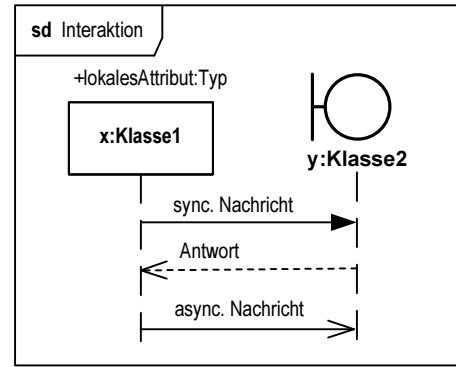
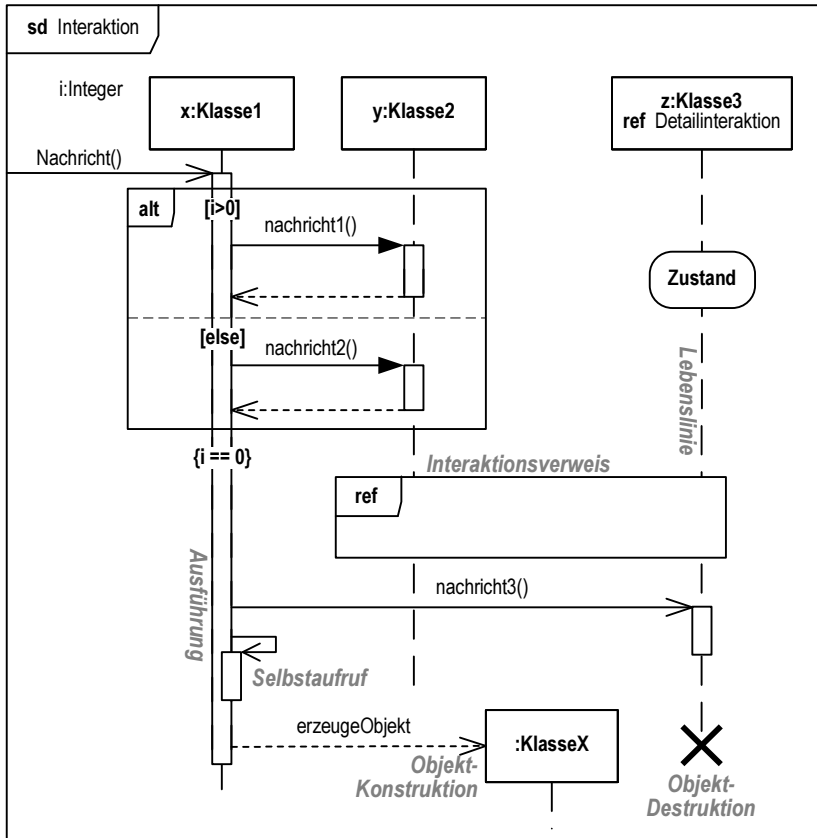
# Aktivitätsdiagramm



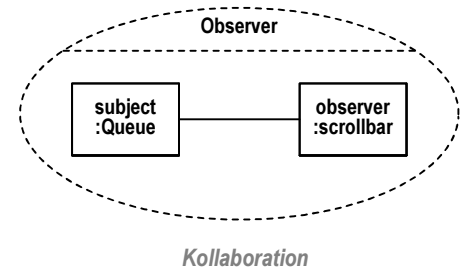
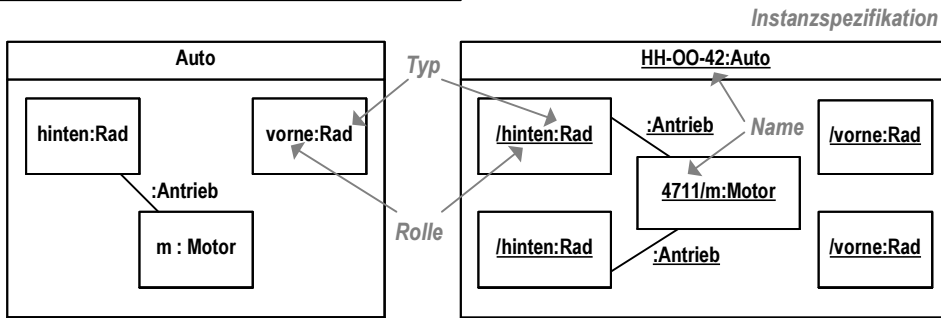
## Interaktionsübersicht



# Sequenzdiagramm



# Kompositionsstrukturdiagramm



# Profildiagramm

