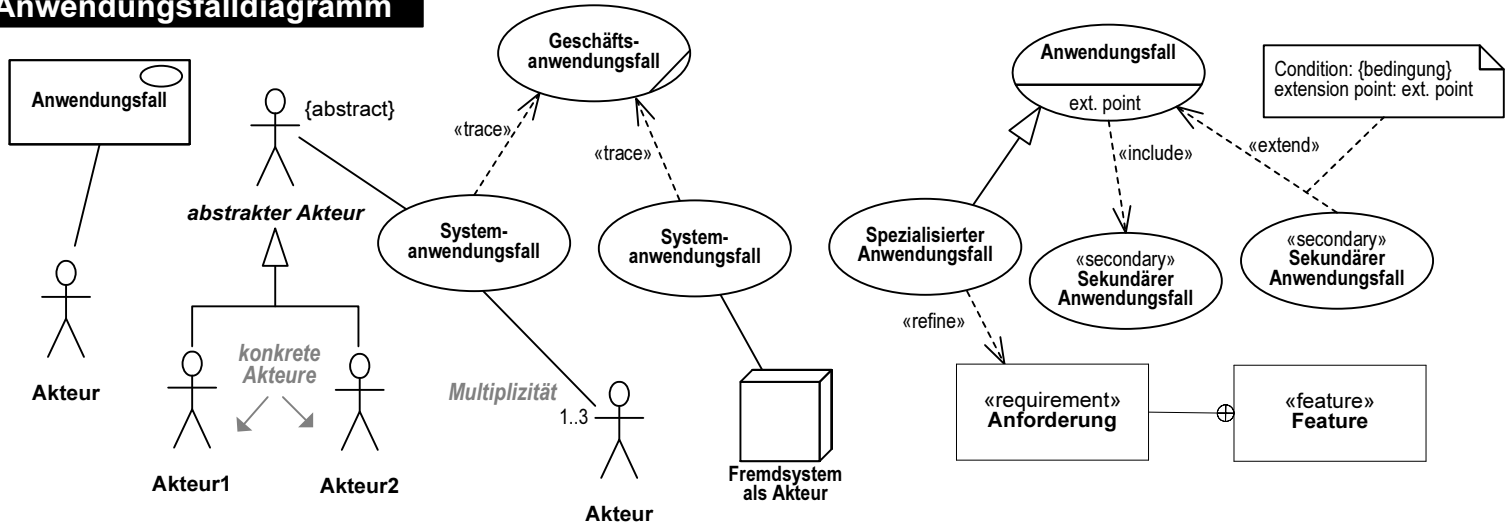
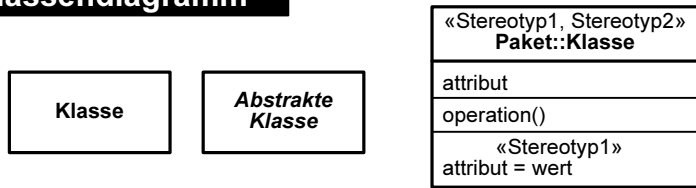


Anwendungsfalldiagramm



Klassendiagramm



Syntax für Attribute:

Sichtbarkeit Attributname : Paket::Typ [Multiplizität Ordnung] = Initialwert {Eigenschaftswerte}
 Eigenschaftswerte: {readOnly}, {ordered}, {composite}

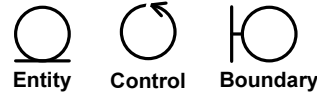
Syntax für Operationen:

Sichtbarkeit Operationsname (Parameterliste):Rückgabety (Eigenschaftswerte)

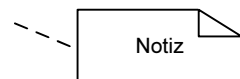
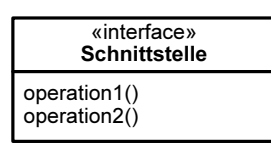
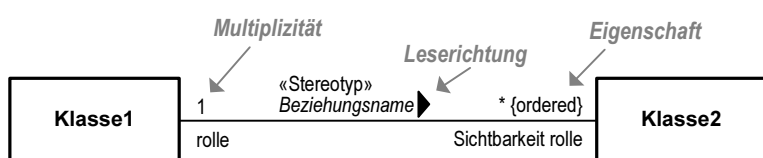
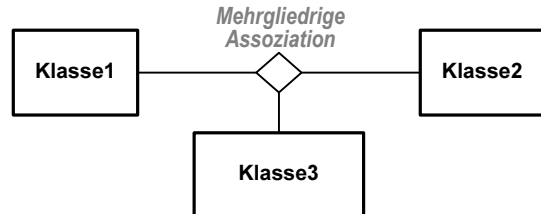
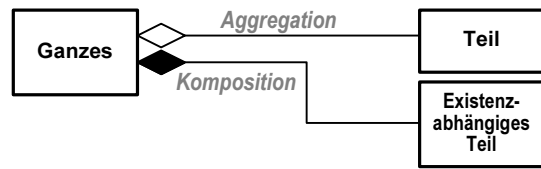
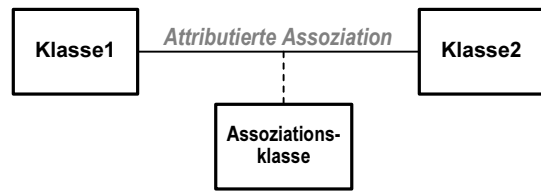
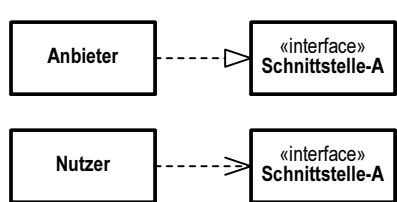
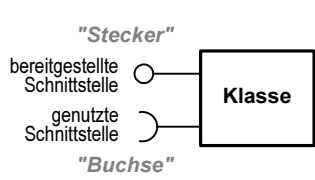
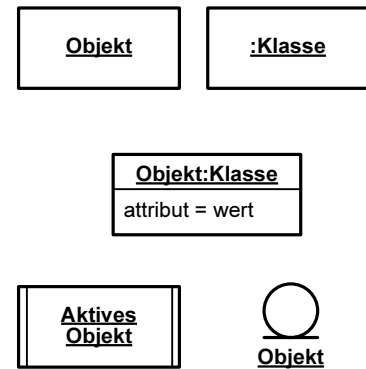
Sichtbarkeit:

- + public element
- # protected element
- private element
- ~ package element

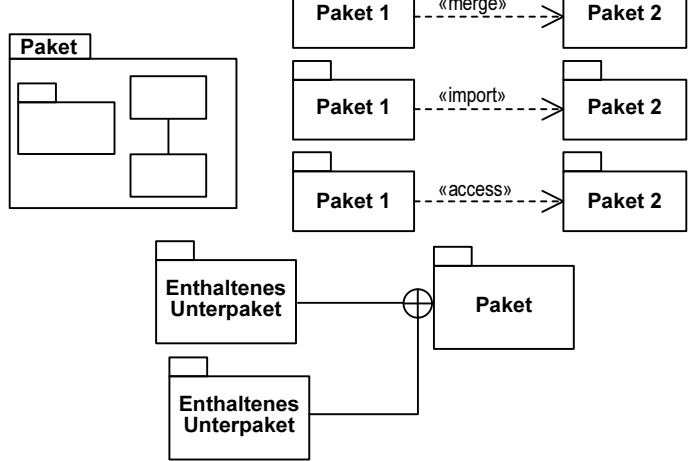
Parameterliste: Richtung Name : Typ = Standardwert
 Eigenschaftswerte: {query}
 Richtung: in, out, inout



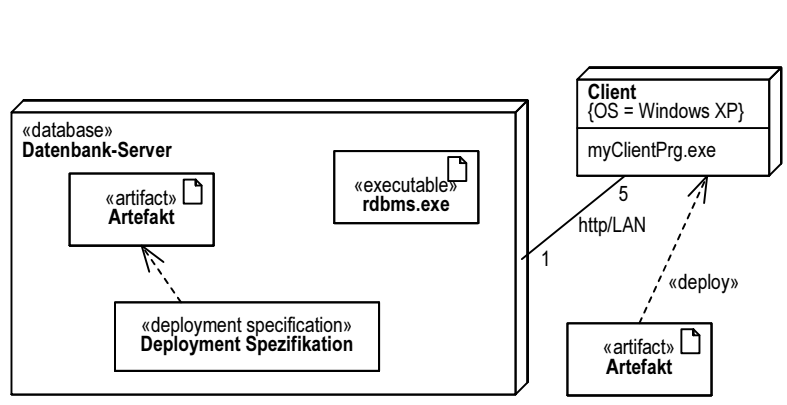
Objektdiagramm



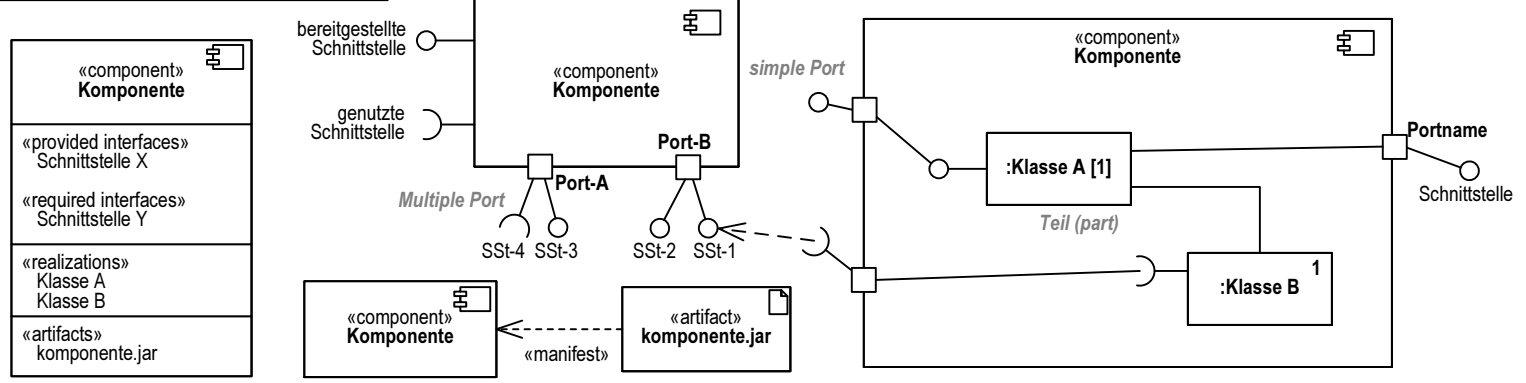
Paketdiagramm



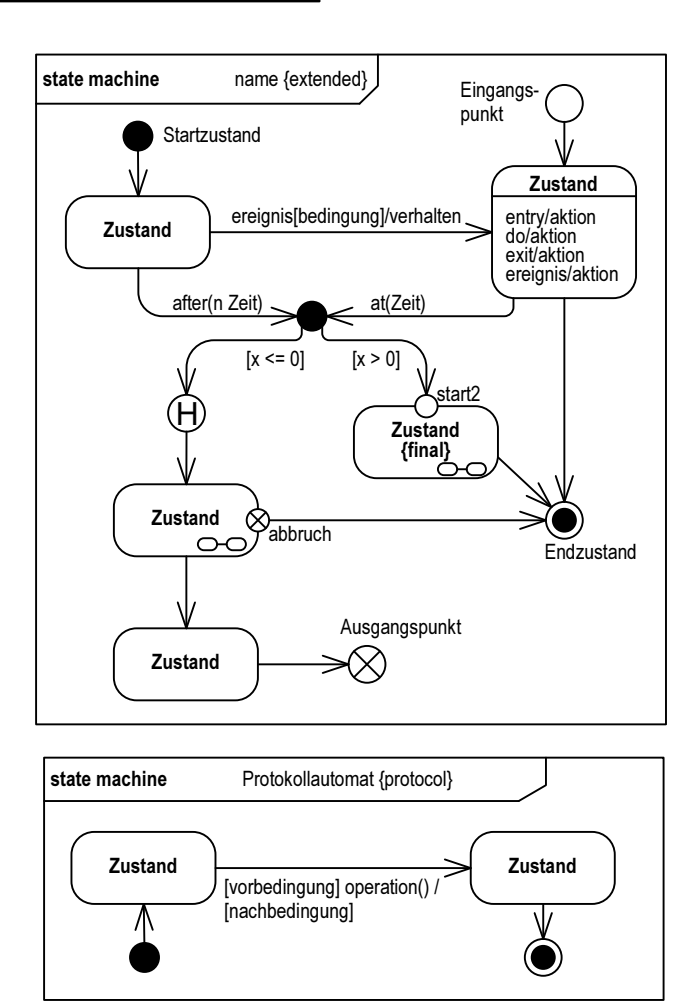
Einsatz- und Verteilungsdiagramm



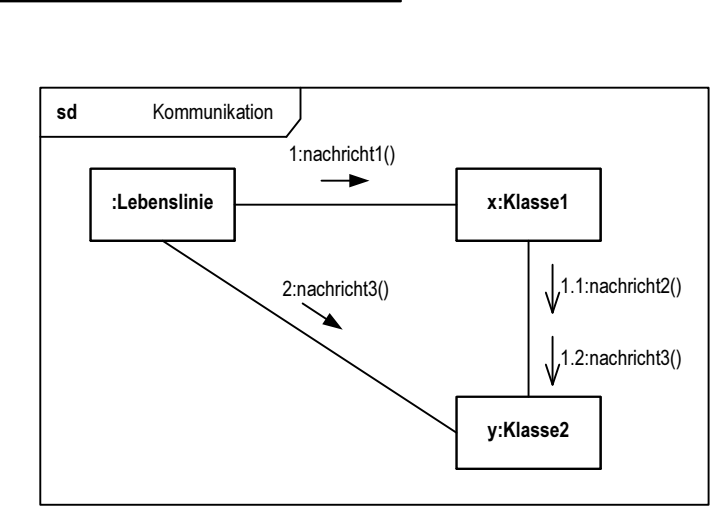
Komponentendiagramm



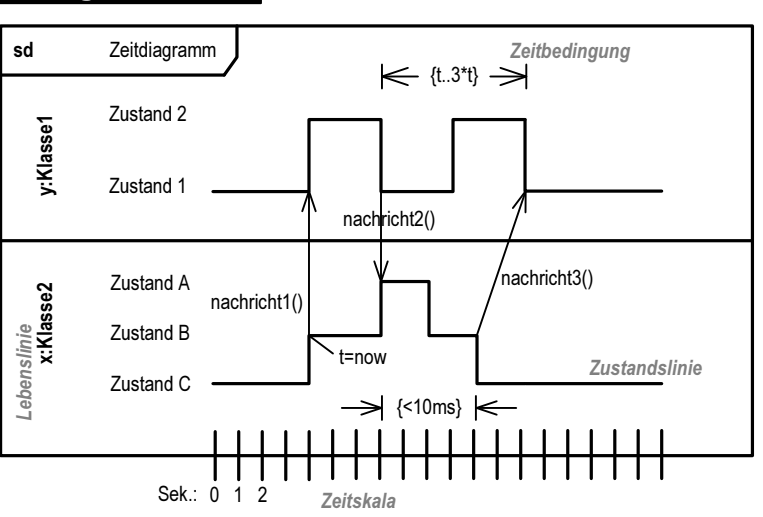
Zustandsdiagramm



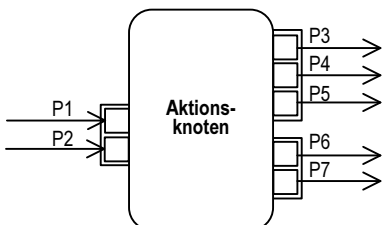
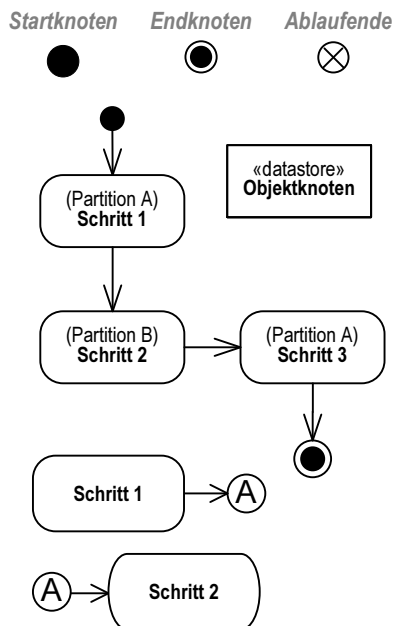
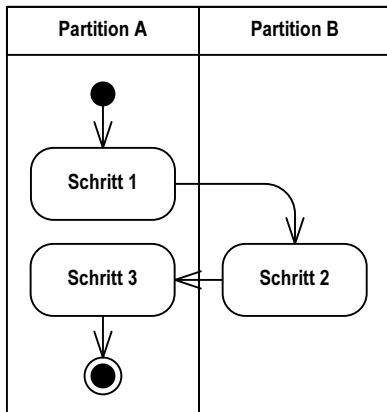
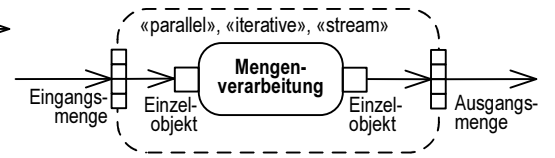
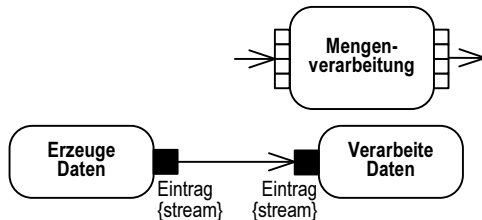
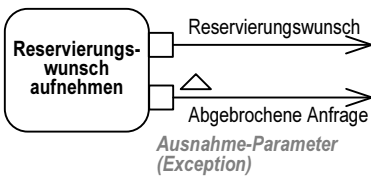
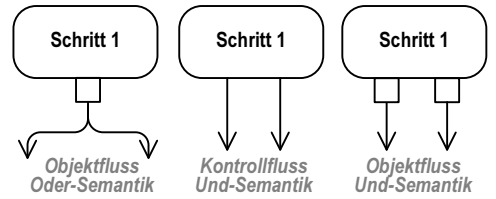
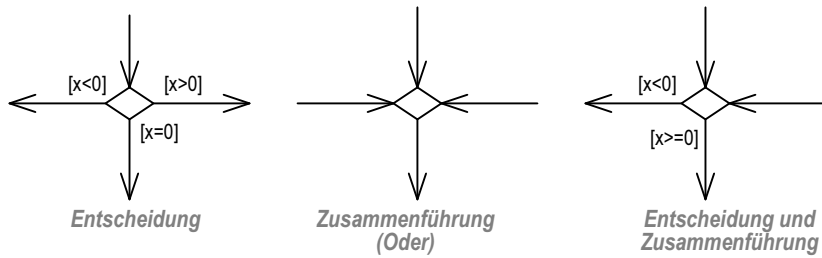
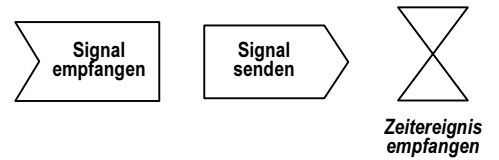
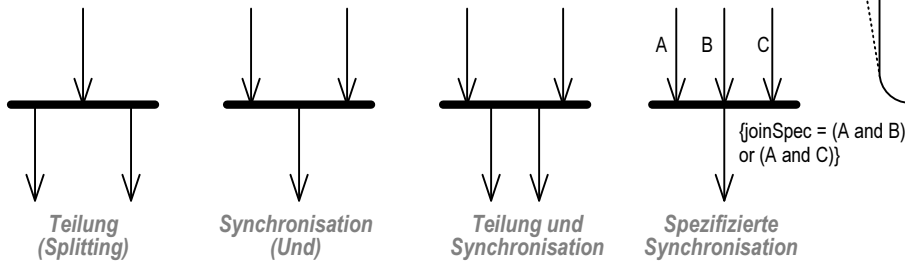
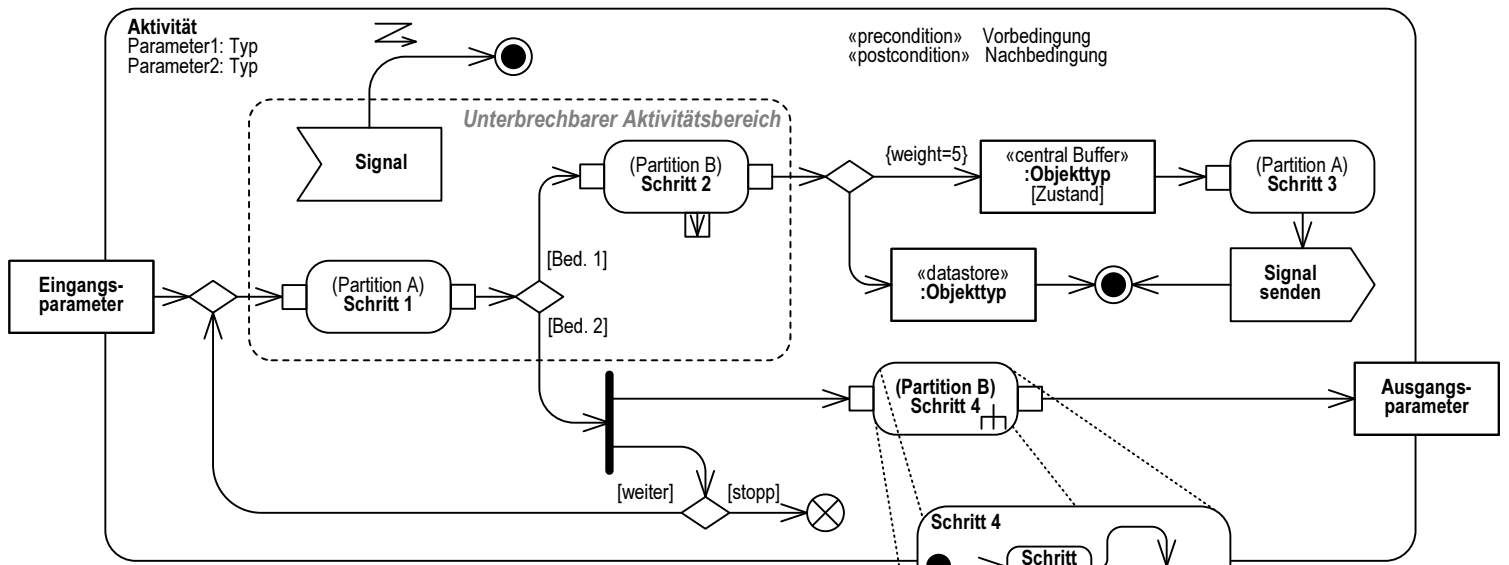
Kommunikationsdiagramm



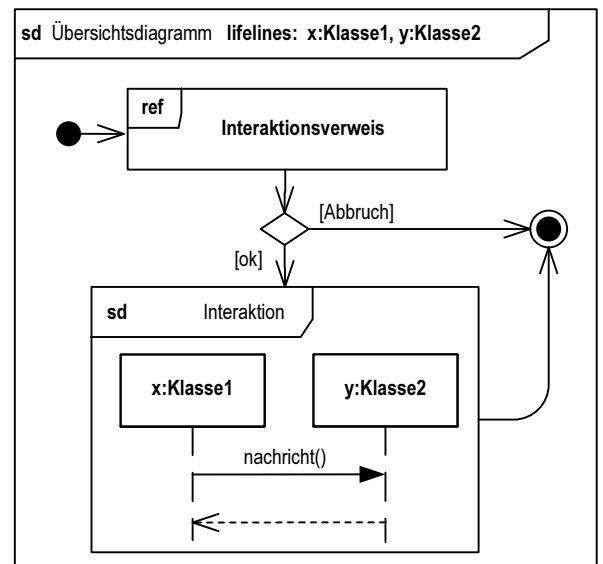
Zeitdiagramm



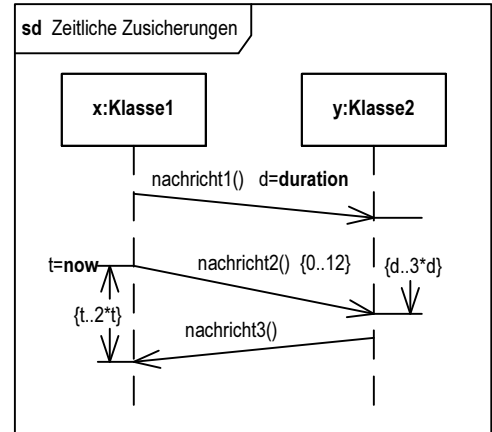
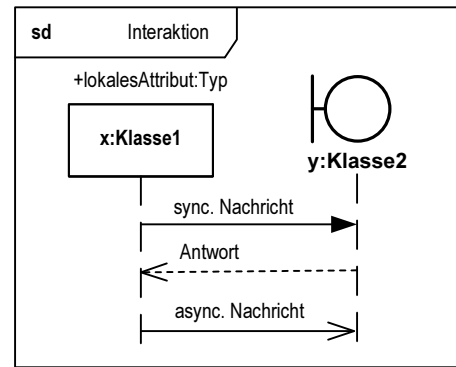
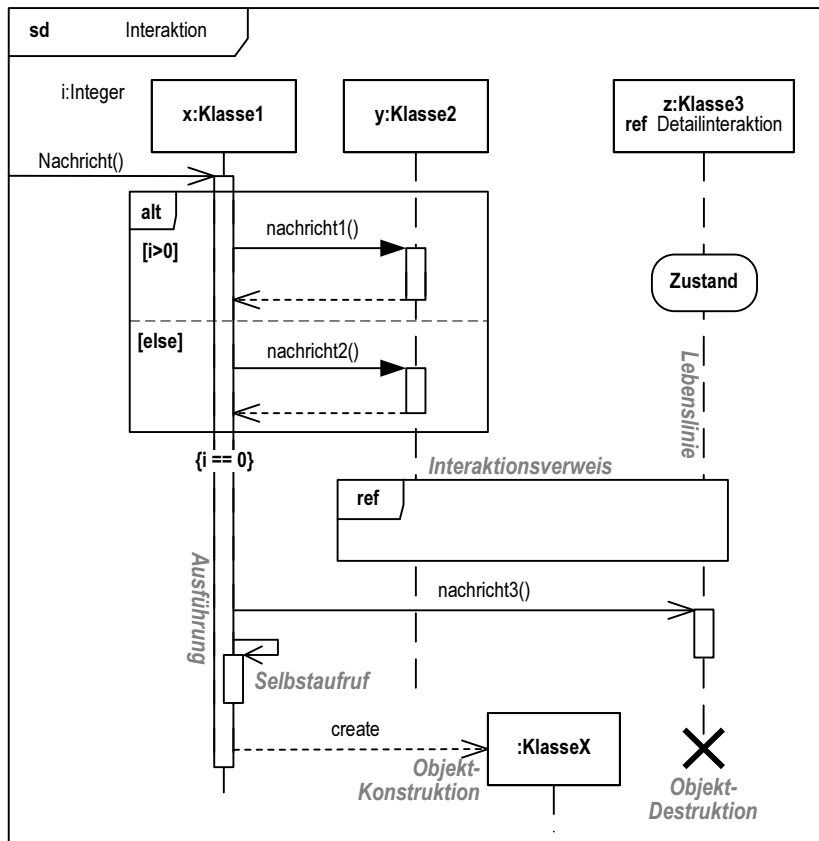
Aktivitätsdiagramm



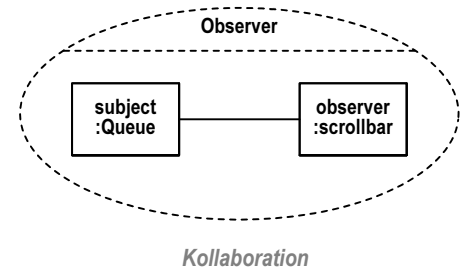
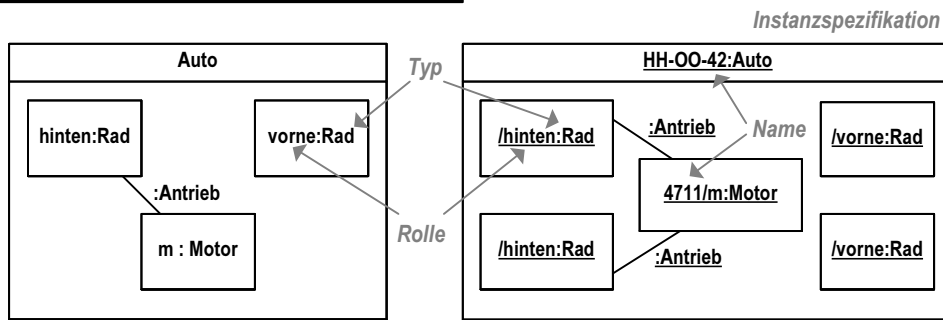
Interaktionsübersicht



Sequenzdiagramm



Kompositionsstrukturdiagramm



Profildiagramm

